

---

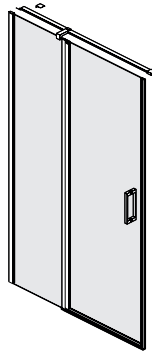
## KAEX.3005 / KAEX3025 / KAEX.3006

---

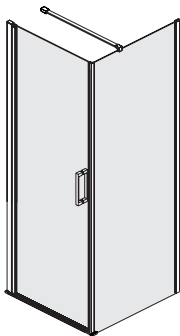
Instrukcja montażu  
Installation instructions  
Installationsanweisungen  
Инструкция по монтажу



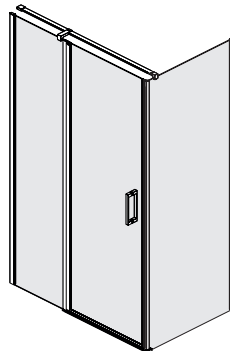
**KAEX.3005** - str. 5



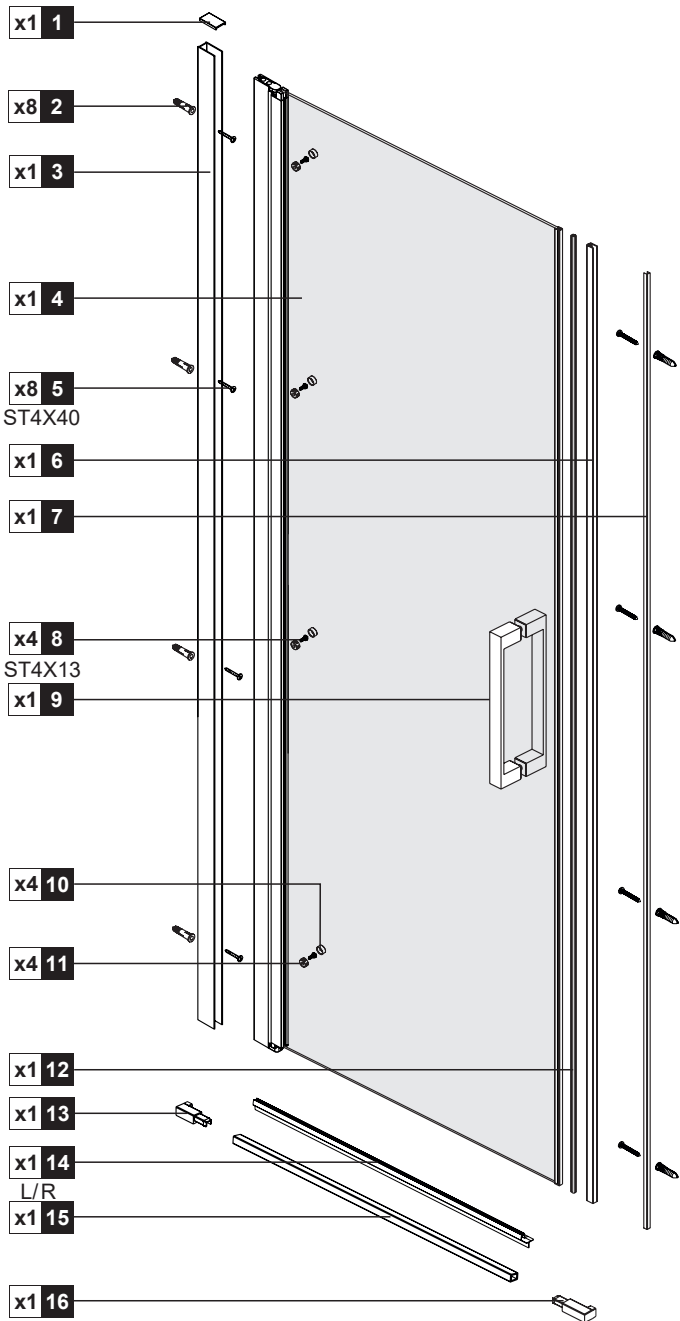
**KAEX.3025** - str. 9

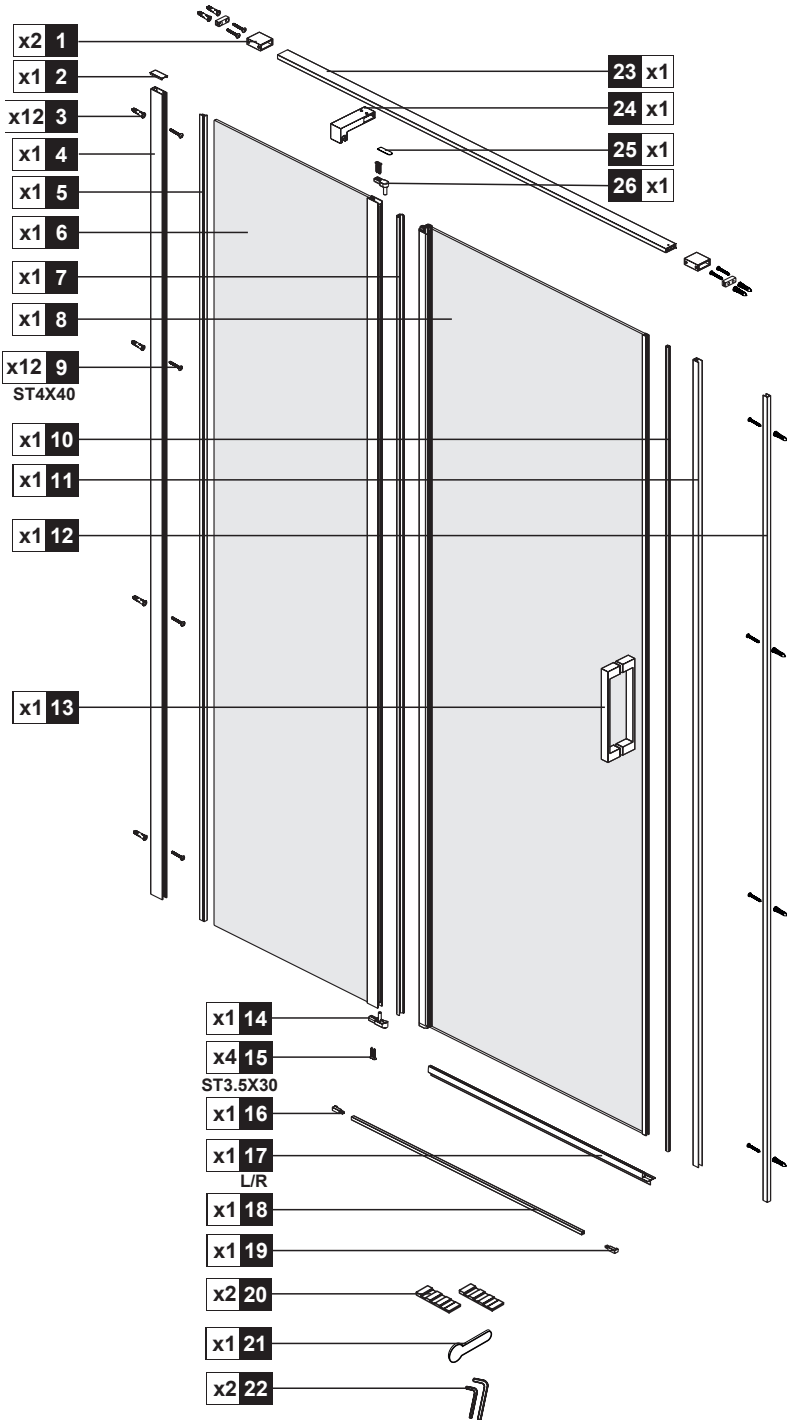


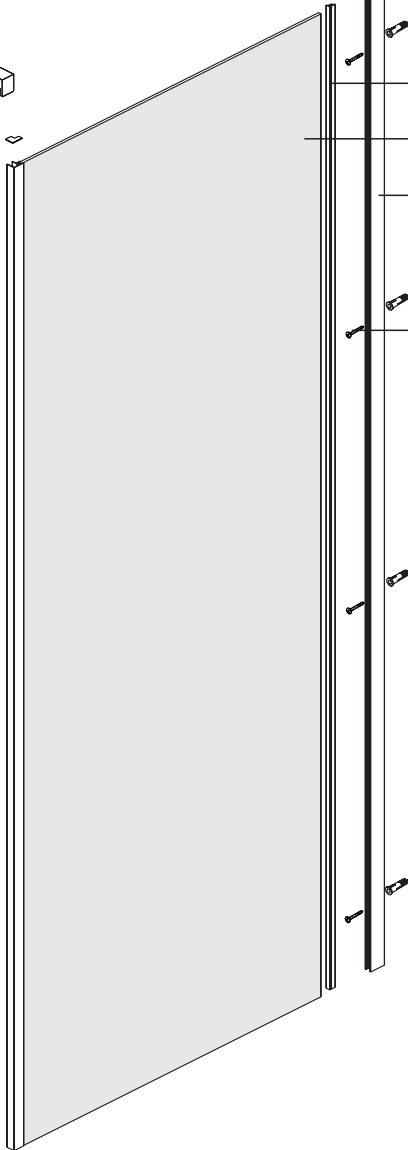
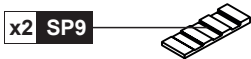
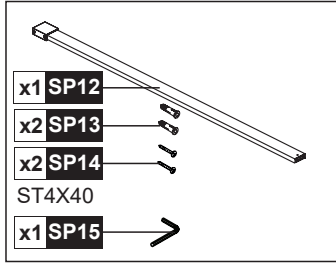
**KAEX.3005 + KAEX.3006** - str. 14



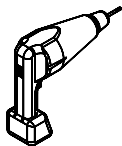
**KAEX.3025 + KAEX.3006** - str. 14



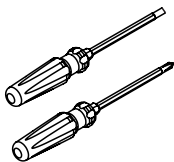




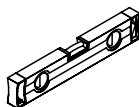
## Potrzebne narzędzia



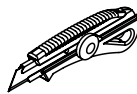
WIERTARKA



ŚRUBOKRĘT



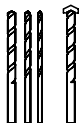
POZIOMICA



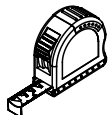
NÓŻ



SILIKON



WIERTŁO: 1/8", 3/16" ET 1/4"  
\*WIERTŁA MURARSKIE



TAŚMA MIERNICZA



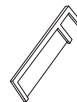
KĄTOWNICA



OLÓWEK

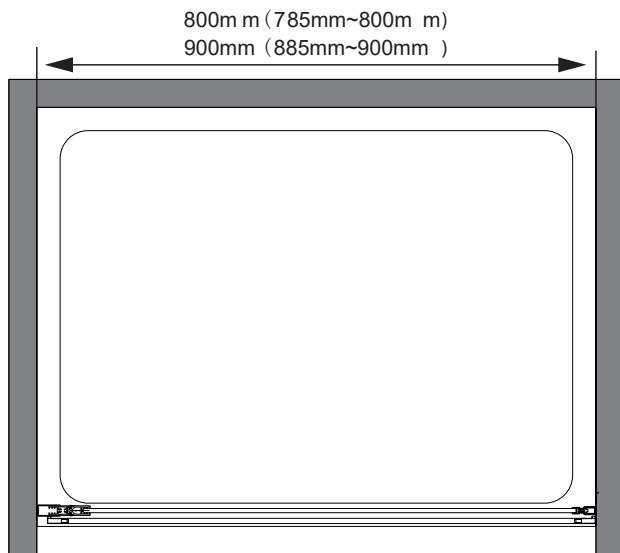


MŁOTEK

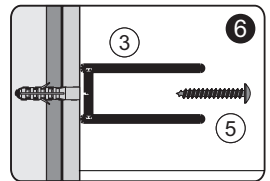
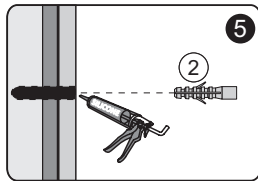
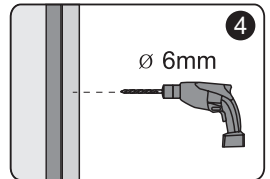
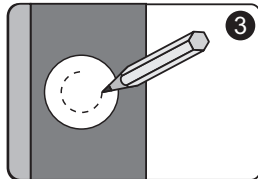
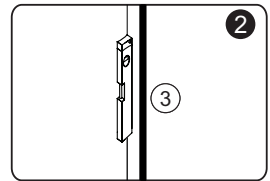
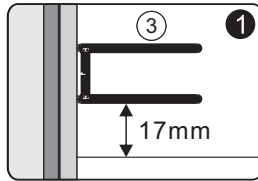
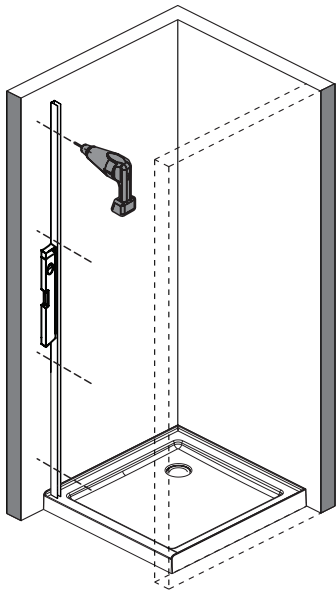


PIŁA

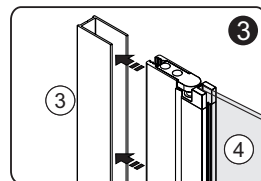
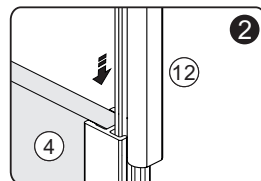
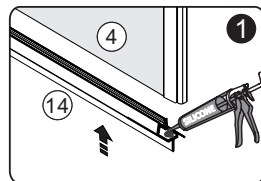
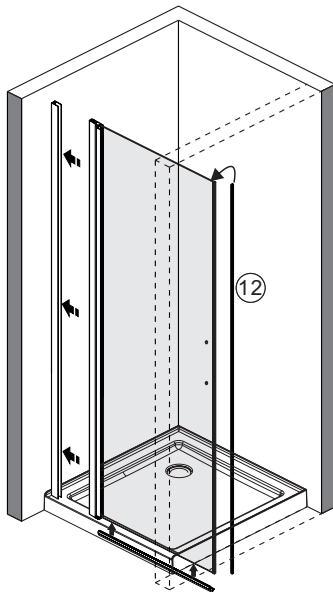
**A** 01 KAEX.3005



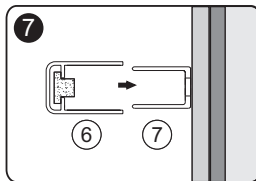
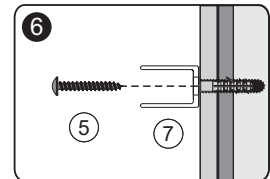
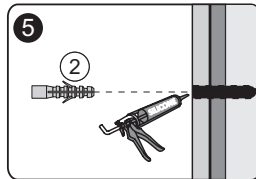
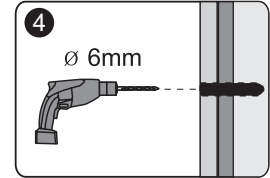
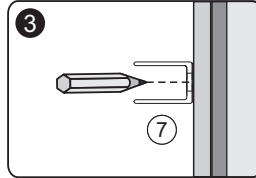
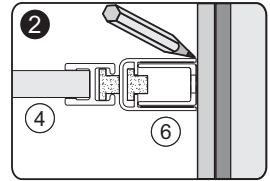
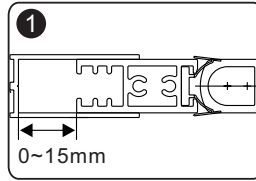
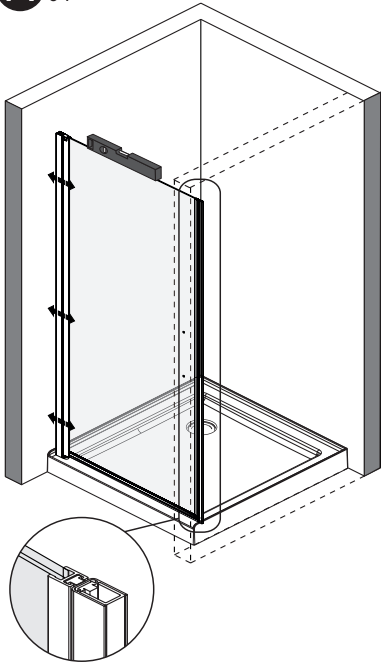
A<sub>02</sub>



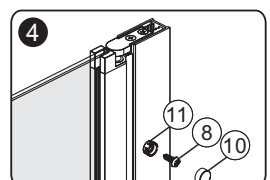
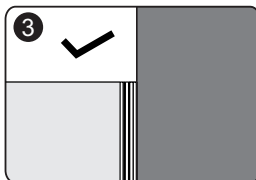
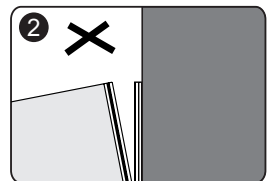
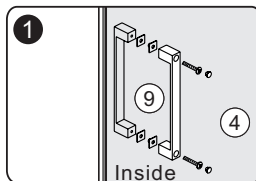
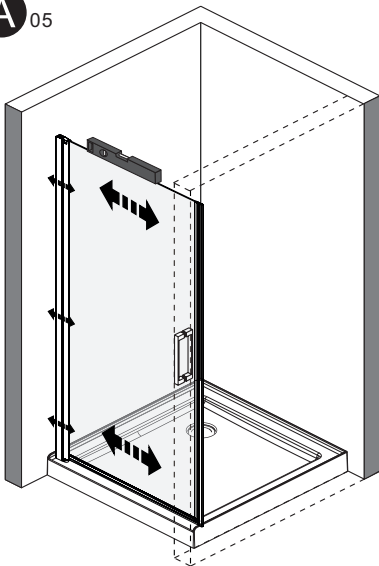
A<sub>03</sub>



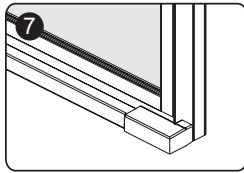
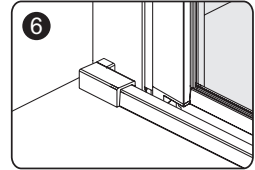
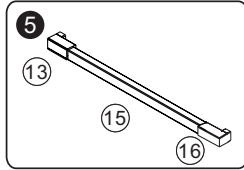
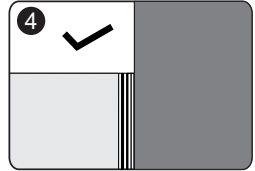
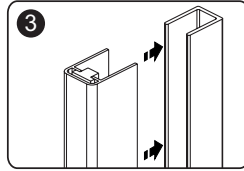
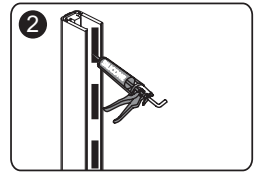
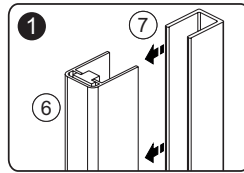
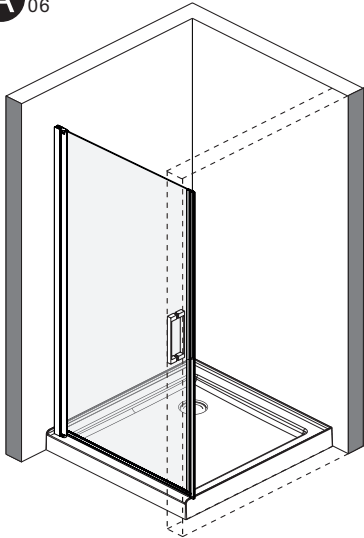
**A**<sub>04</sub>



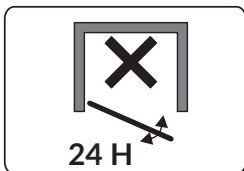
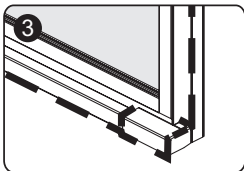
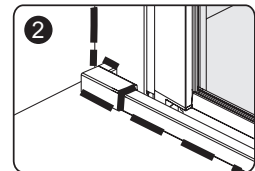
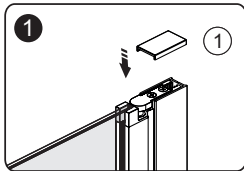
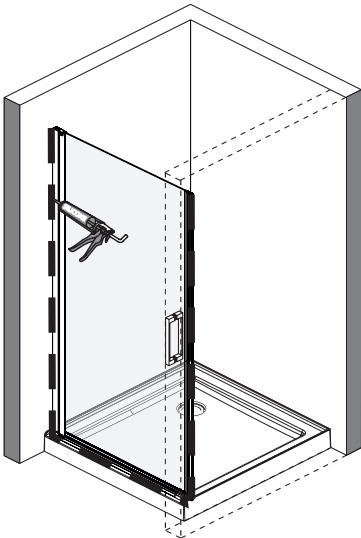
**A**<sub>05</sub>



A<sub>06</sub>



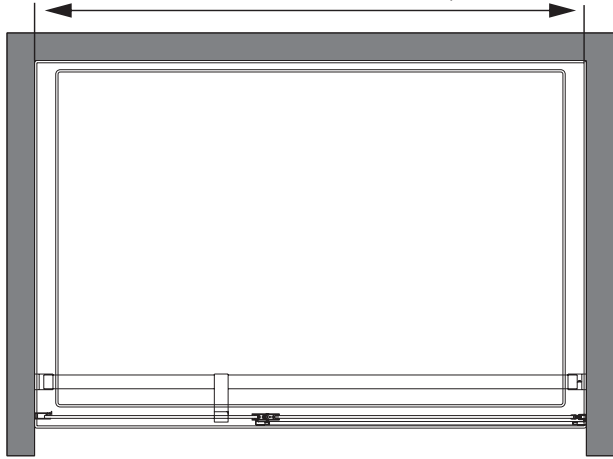
A<sub>07</sub>



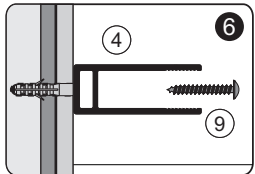
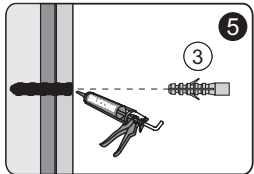
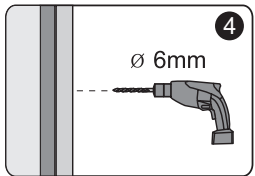
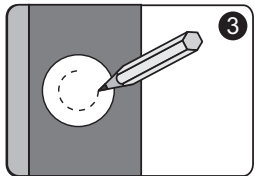
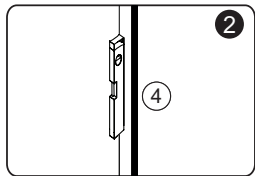
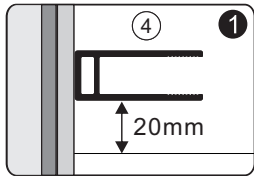
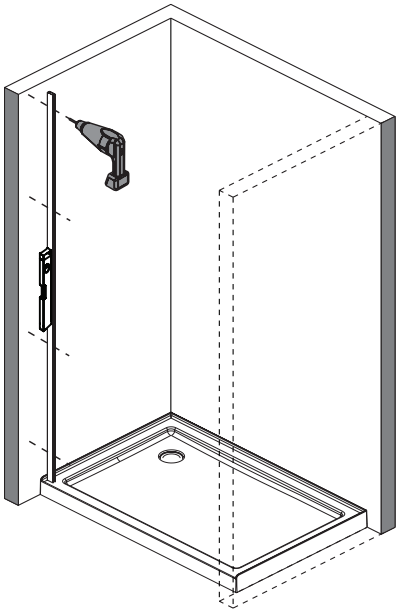


**B**<sub>01</sub> KAEX.3025

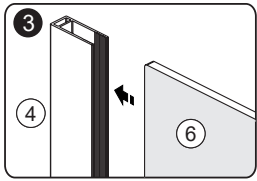
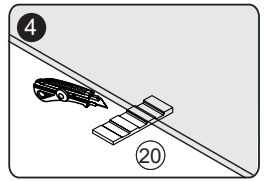
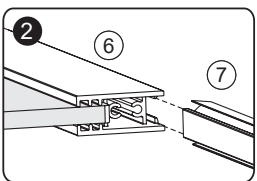
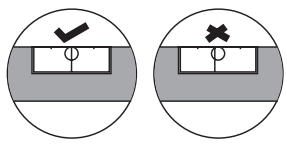
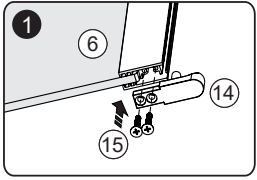
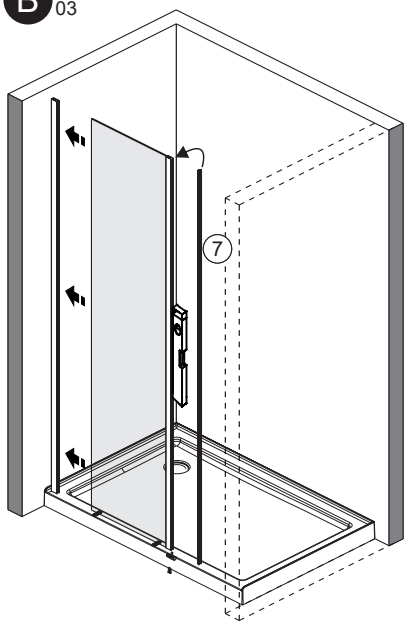
1200mm (1185mm~1200mm)  
1300mm (1285mm~1300mm)  
1400mm (1385mm~1400mm)  
1500mm (1485mm~1500mm)



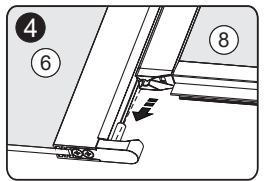
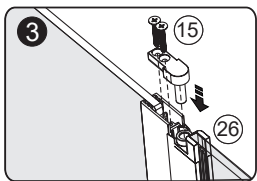
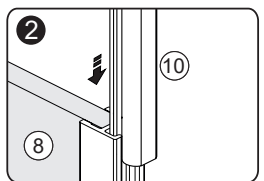
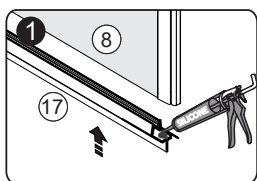
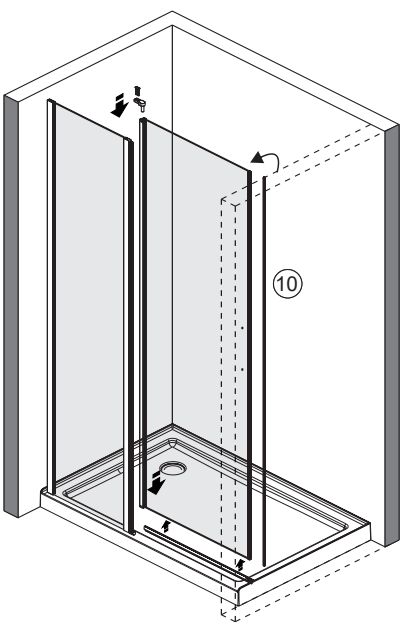
**B**<sub>02</sub>



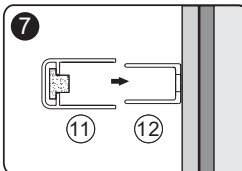
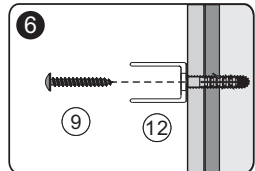
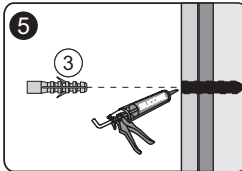
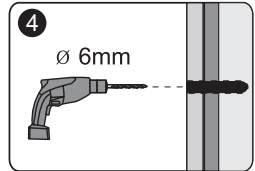
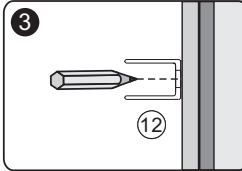
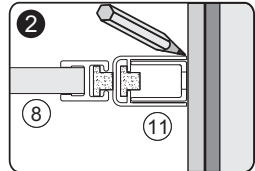
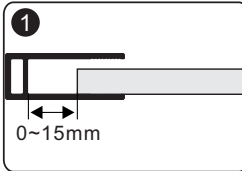
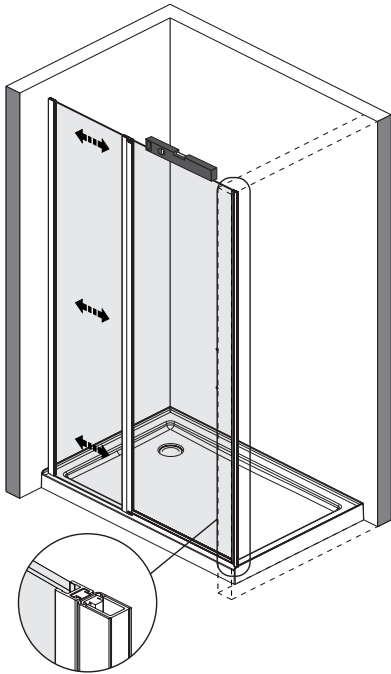
**B** 03



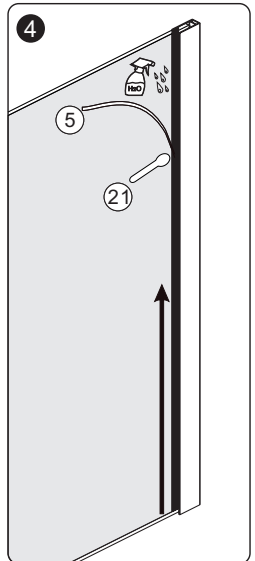
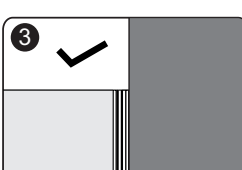
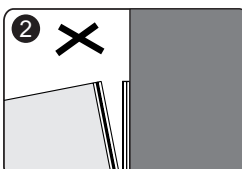
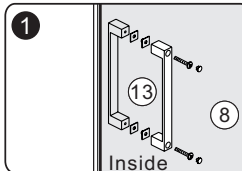
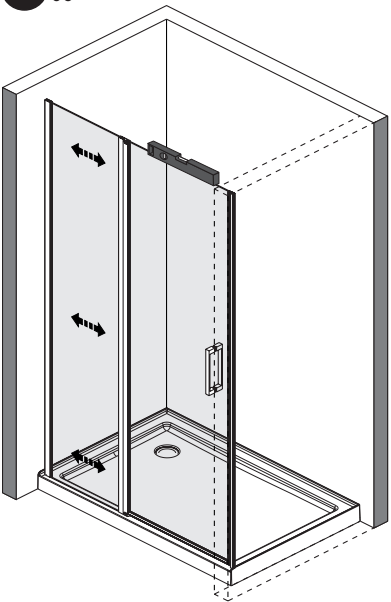
**B** 04



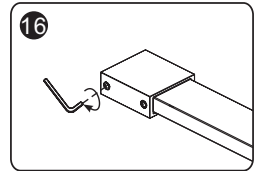
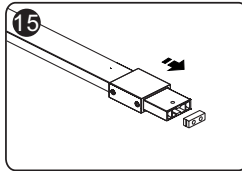
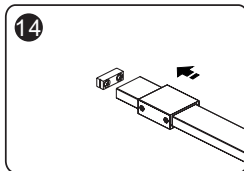
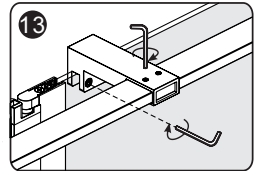
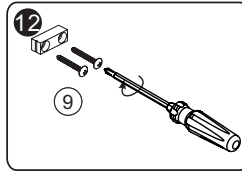
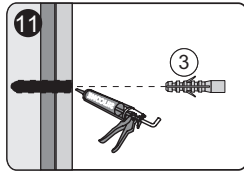
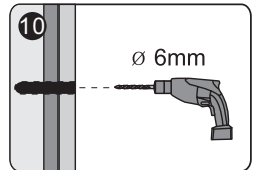
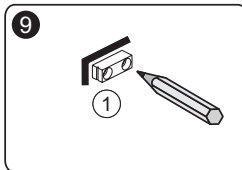
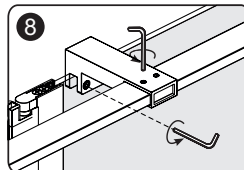
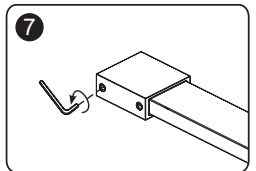
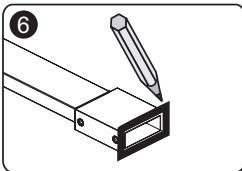
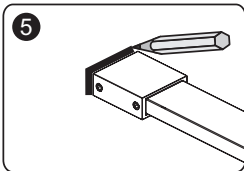
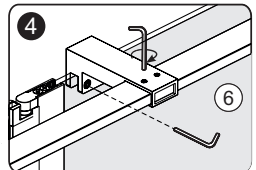
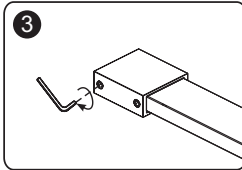
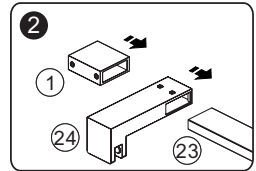
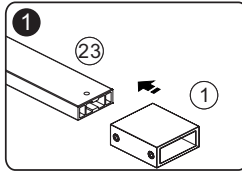
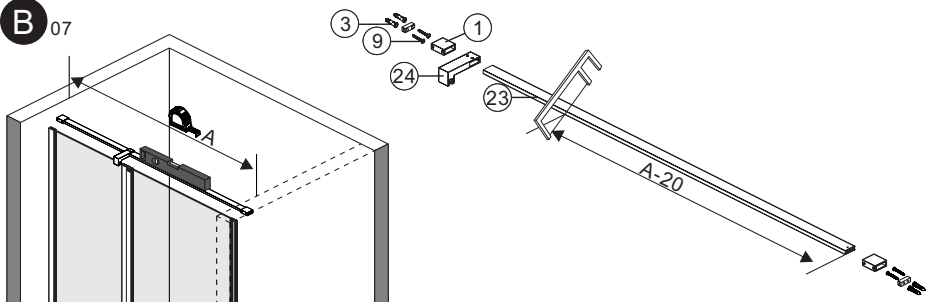
**B** 05



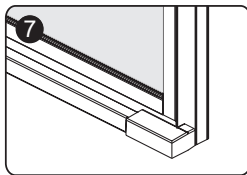
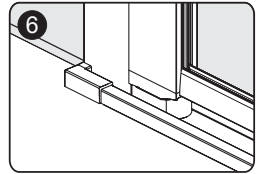
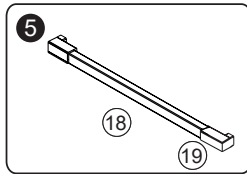
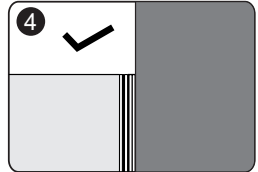
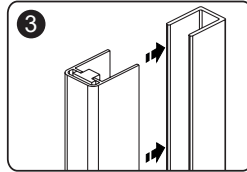
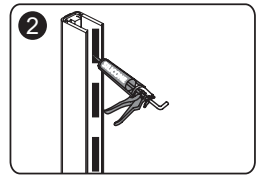
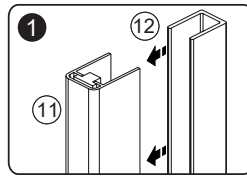
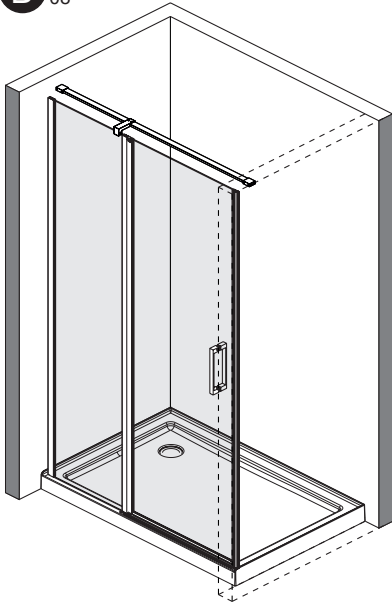
**B** 06



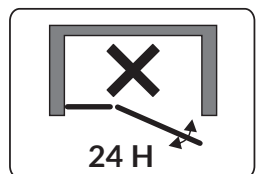
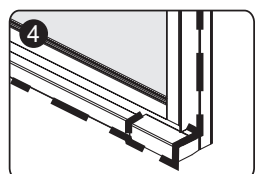
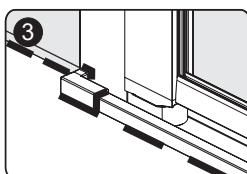
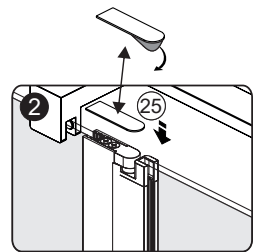
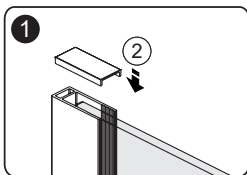
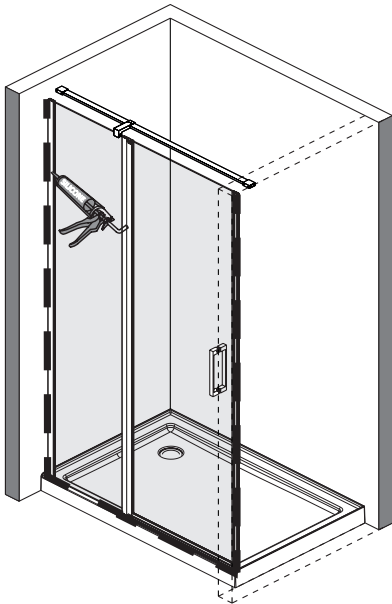
**B**<sub>07</sub>



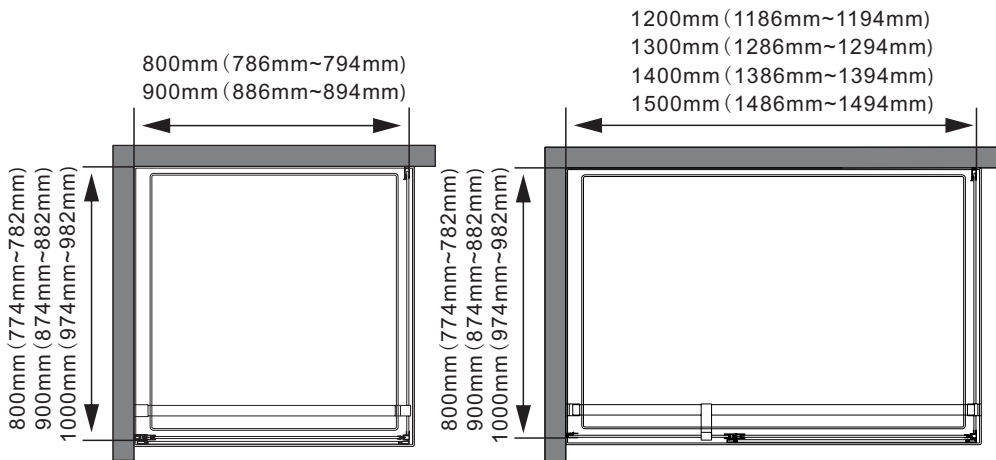
**B** 08



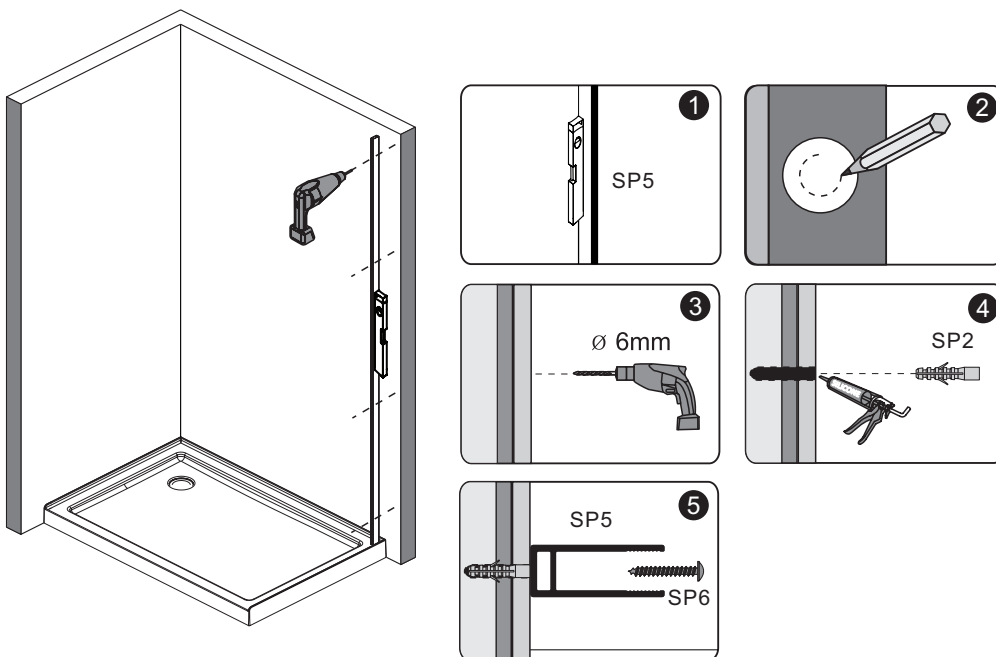
**B** 09



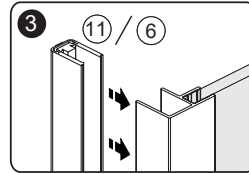
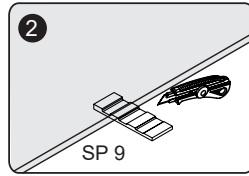
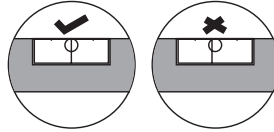
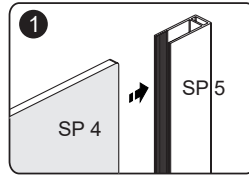
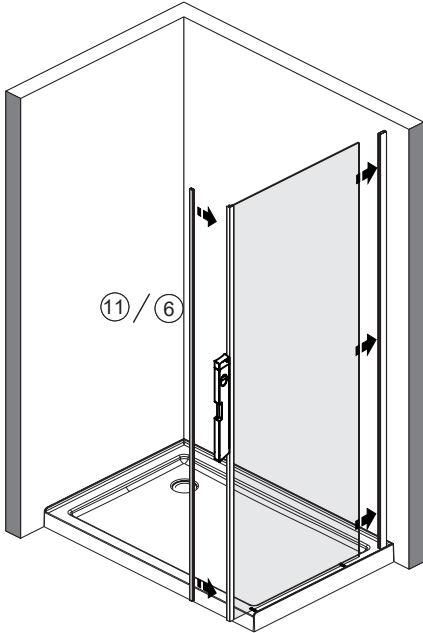
**C** 01 **KAEX.3006**



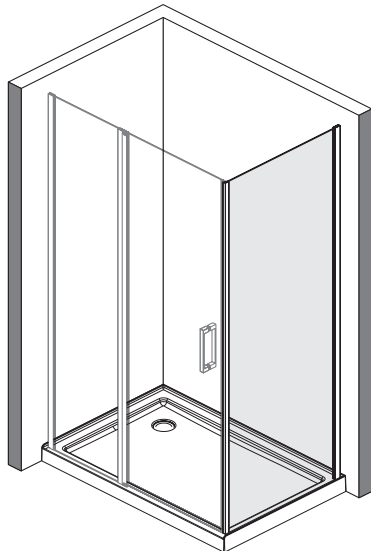
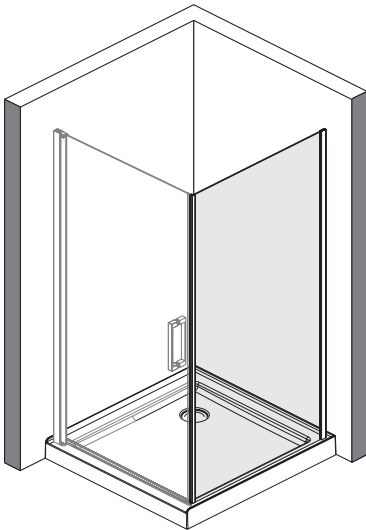
**C** 02



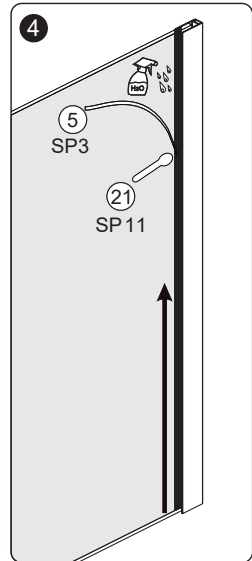
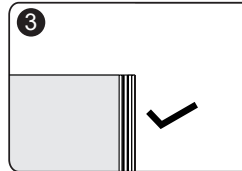
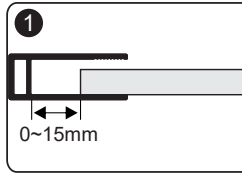
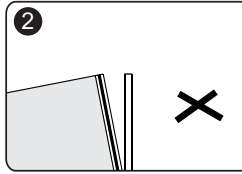
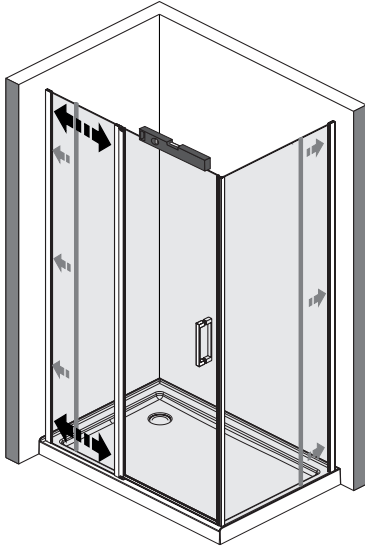
**C** 03



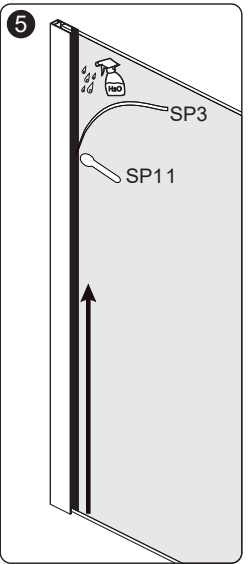
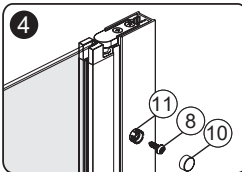
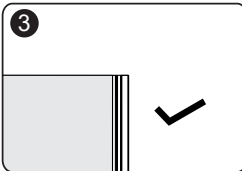
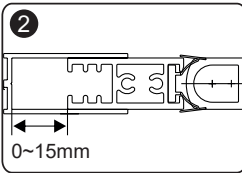
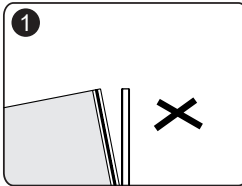
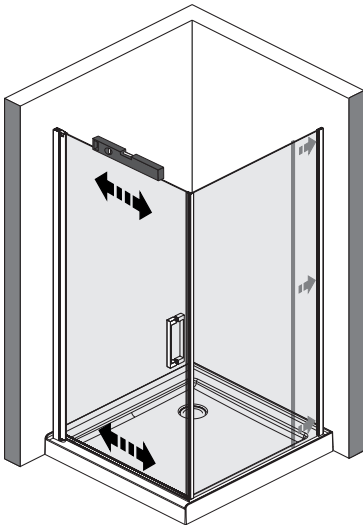
**C** 04



**C** 05

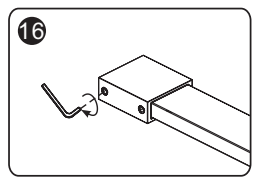
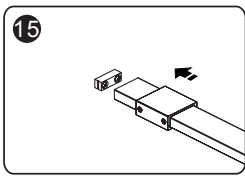
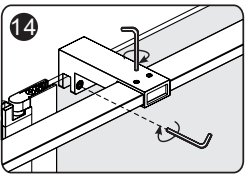
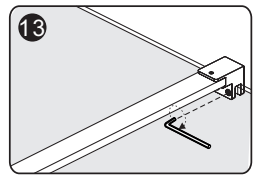
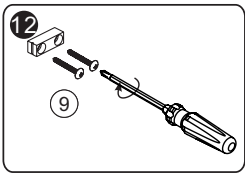
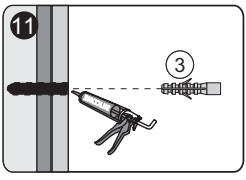
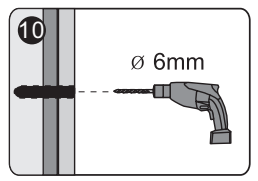
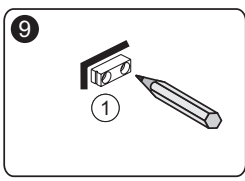
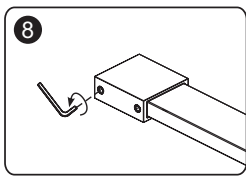
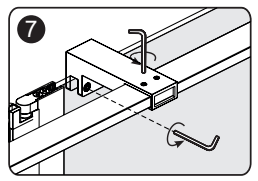
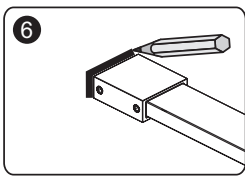
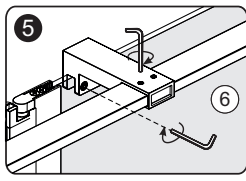
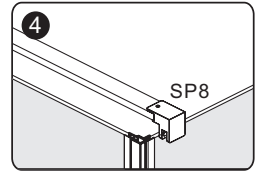
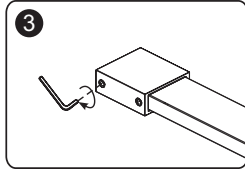
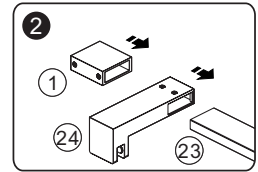
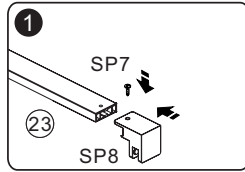
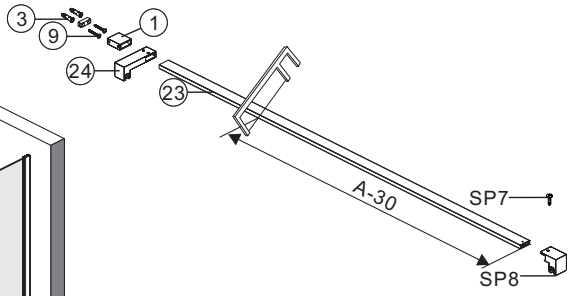
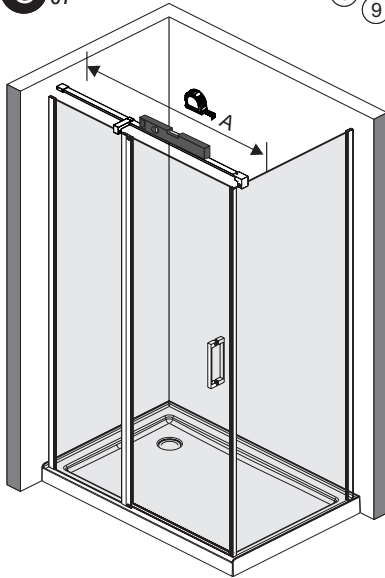


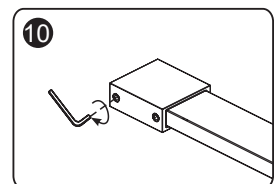
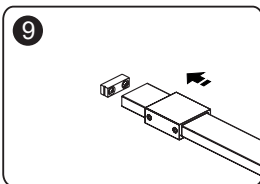
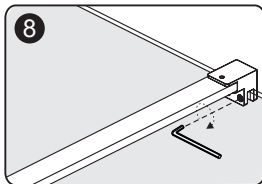
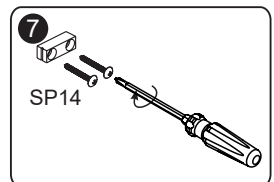
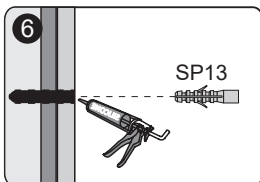
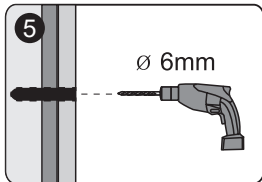
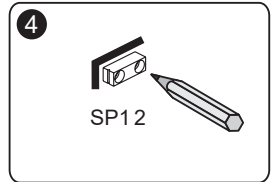
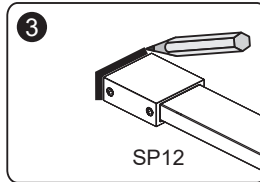
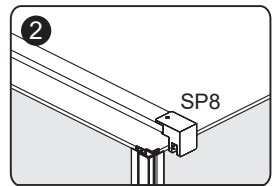
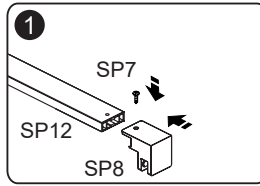
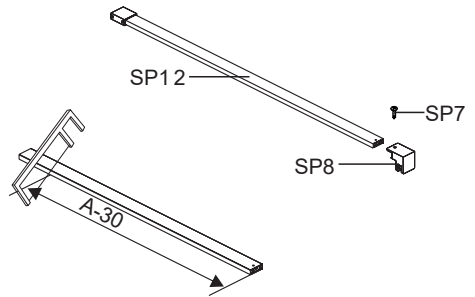
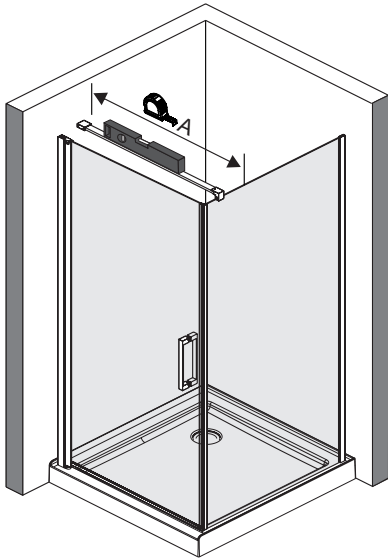
**C** 06



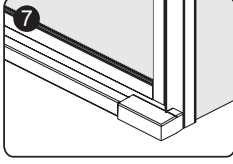
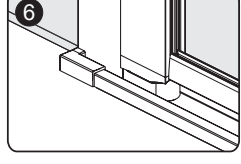
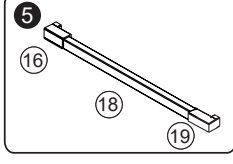
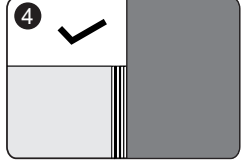
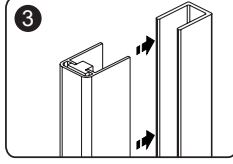
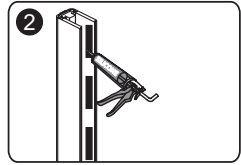
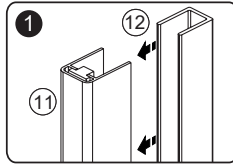
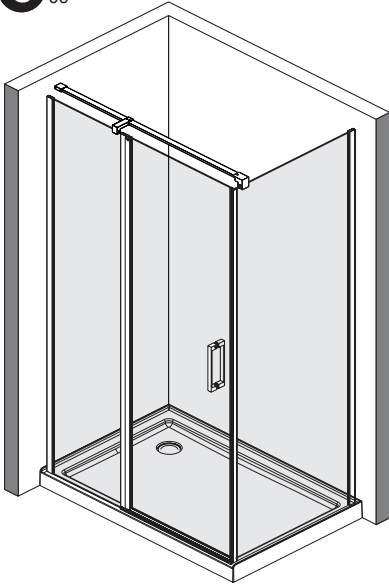


**C** 07

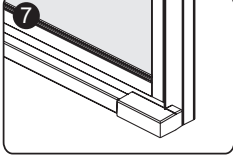
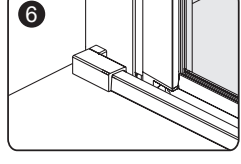
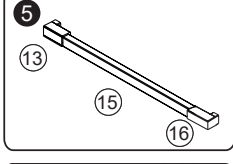
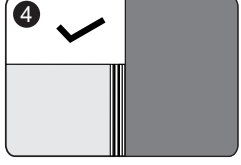
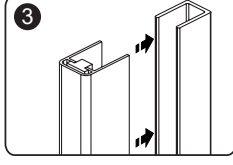
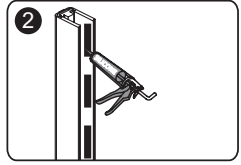
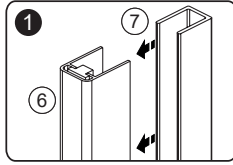
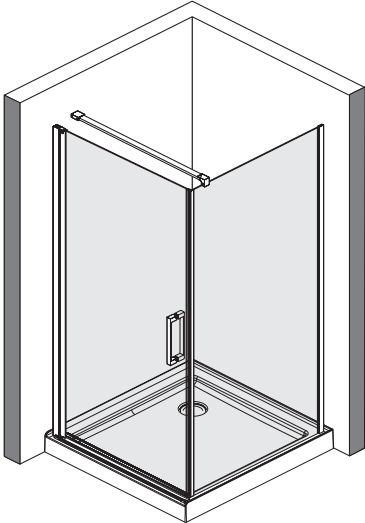




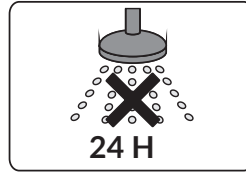
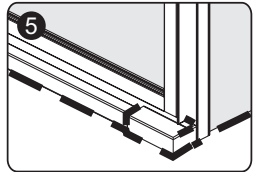
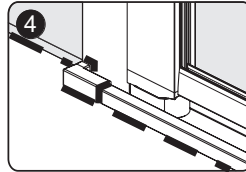
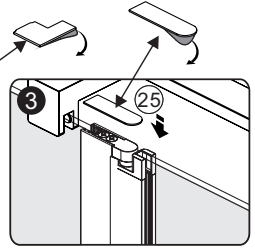
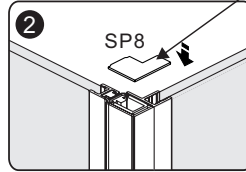
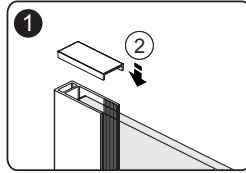
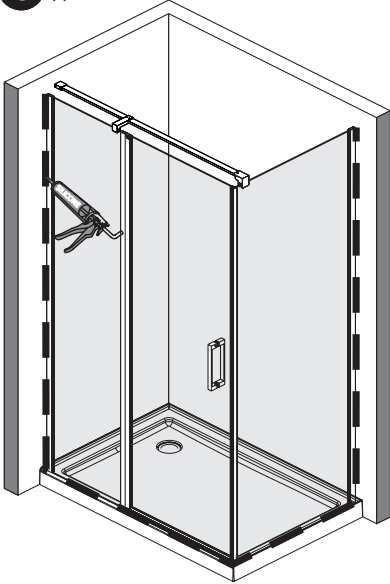
**C**<sub>09</sub>



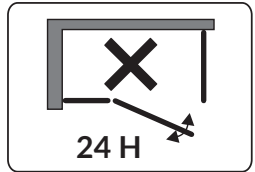
**C**<sub>10</sub>



**C** 11

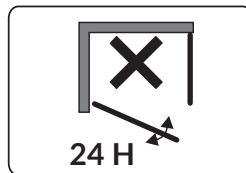
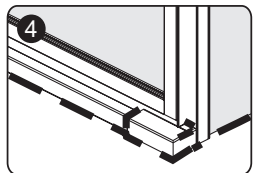
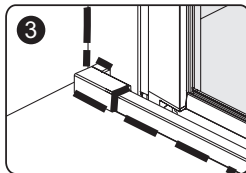
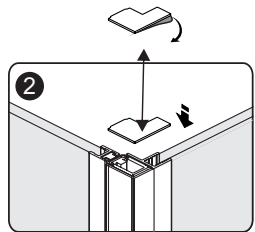
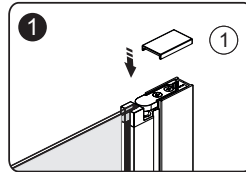
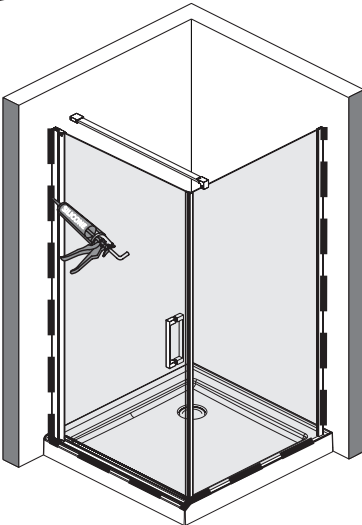


24 H

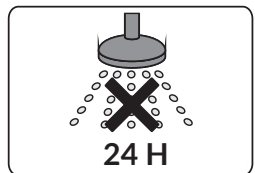


24 H

**C** 12



24 H



24 H

## CZYSZCZENIE I KONSERWACJA

Aby utrzymać powierzchnię szkła kabiny w nienagannym stanie przez wiele miesięcy warto zastosować się do poniższych wskazówek:

- po każdej kąpeli należy spłukać wodą oraz ściągaczką do szyb lub miękką tkaniną i usunąć wodę z szyby,
- nie należy doo czyszczenia kabiny używać środków zawierających kwasy, aceton, formaldehydy czy też benzynę

## GWARANCJA

Warunki gwarancji dostępne na stronie <http://www.excellent.com.pl/gwarancja>





# EXCELLENT

Excellent SA  
32-003 Podłęże 662

Tel.: 12 657 18 87  
e-mail: [lazienki@excellent.com.pl](mailto:lazienki@excellent.com.pl)

[www.excellent.com.pl](http://www.excellent.com.pl)